



The Spark and evidence of acupuncture.

IMMUNITY IN CHINESE MEDICINE

Weak immunity



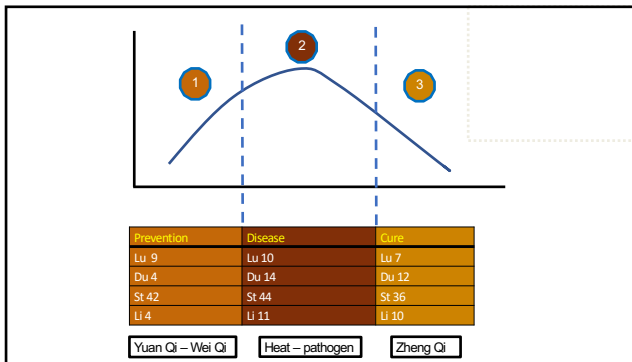
Dr. Yair Maimon

Introduction with Relevance to Our Time

Immunity vs. Pathogen Zheng Qi vs. Xie Qi

Zheng Qi ↔ **Xie Qi** A struggle of 2 types of Qi

Zheng Qi (immune) vitality, immunity, antibody	Xie Qi (Pathogen) damp, heat, cold, toxins	Result
Good ▲	strong	healthy
Slightly weak	strong ▼	mild disease
Weak ▲	strong ▼	serious disease



DU 12 身柱 Shen Zhu/Body Pillar

ACTIONS
 Clears heat from the Lung and Heart
 Pacifies wind
 Tonifies the Lungs and Wei Qi

INDICATIONS
 Heat in the chest, dyspnoea, sudden cough
 Body Pillar – lung - Wei Qi
 Allergies – stuck Heat
 Column, linking Heaven and Earth- standing erect

Li Shi Zhen (李时珍)

Li Shi Zhen (Ming dynasty) talked about hygiene
 He was a great pharmacologist, physician ...
 He diagnosed the **plague** as
 Heat **diseases** entering **through** the **mouth** and **nose**.

16th century: Compendium of Materia Medica - Bencao Gangmu
8 extra

Systems

Orchestrating life

- Immune
- Hormonal
- Neurological

Local

- Digestive
- Respiratory
- Urinary

Good Health (Physiology)

- Wei Qi (Ying Qi)
- Jing Qi (Yuan Qi)
- Shen Qi

Teaching from a healthy model stand point

Causes of Disease

Causes of Disease

- **External** (earth)
- **Internal** (man)
- **Lack of communication** with one's **Dao** (heaven)

Body's Defence

- Wei Qi
- Ying Qi
- Shen Qi

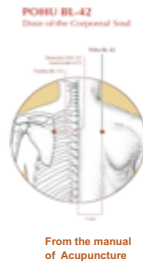
They all are inter-related

BL-42 魄戶 Po Hu – Door of Po

oAt the level of Feishu BL-13, the back Shu indications for this point is one of **severe exhaustion of the Lung**

o**loss of consciousness** – relates to the Po

o**Moxa** – WBC



Immune System: Herbs that tonify Yuan Qi

Ginseng - Ren Shen - the character "Ren" looks like a person

Ren Shen:	Panax ginseng - Qi
Hong Ren Shen:	Red Panax ginseng - Yang
Xi Yang Shen:	Panax quinquefolium - Yin
Ci Wu Jia:	Siberian eleutherococcus

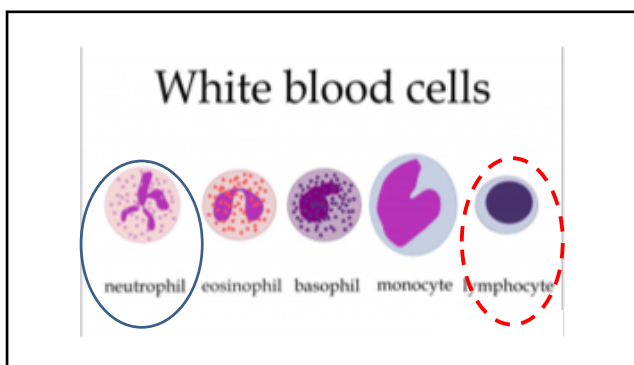


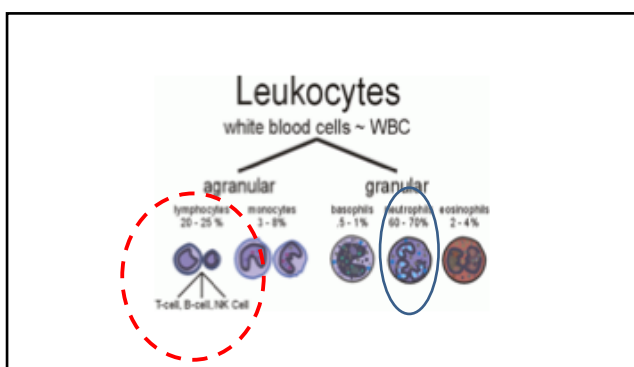
• Immunity - adaptogen

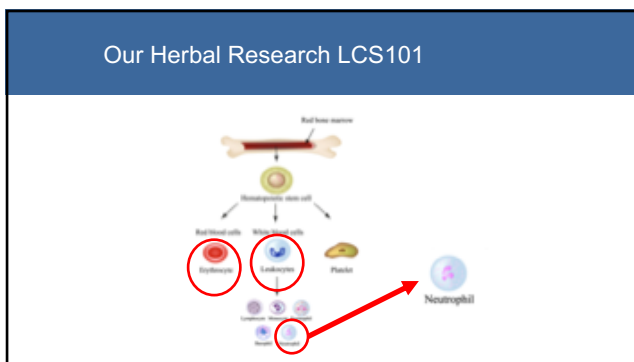
Immune System

Formulas:

- **Yu Ping Feng San** 玉屏風散:
Huang Qi, Bai Zhu, Fang Feng
- **LCS101 (Protectival)**
- **LCS 102 (Tonix-R)**







Immuno-modulatory Effects of the Botanical Compound LCS101: Implications for Cancer Treatment

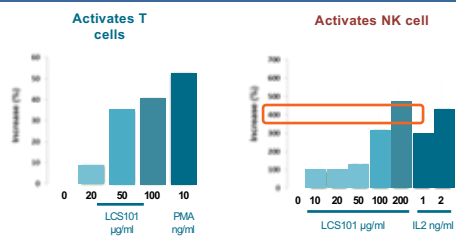
Rachmut I ; Samuels N ; Melnick S ; Ramachandran C ;
Sharabi Y ; Pavlovsky A ; Maimon Y ; Shoham J.

Published in :
OncoTargets and Therapy 2013;6:437-445

OncoTargets and Therapy

16

LCS 101 Activates the Immune System



LCS 101
consists of a mixture
of extracts of the following
concentrated 14 botanicals

Lycium Chinense
Ligustrum Lucidum
Ophiopogon Japonicus
Glehnia Littoralis
Milletia Reticulata
Scutellaria Barbata
Prunella Vulgaris
Citrus Reticulata
Oldenlandia Diffusa
Astragalus Membranaceus
Poriae Cocos
Paeonia Obovata
Paeonia Lactiflora
Atractylodes Macrocephala

At a glance
LCS 101
(ProteTival)

Lifebiotic.com.

Protection from Chemotherapy side effects

Anti Cancer Effect

Immunological Effect

ZUSANLI ST-36
Leg Three Miles

3 means that it harmonizes kid, sp, st
Some say the upper, middle, lower Jiao

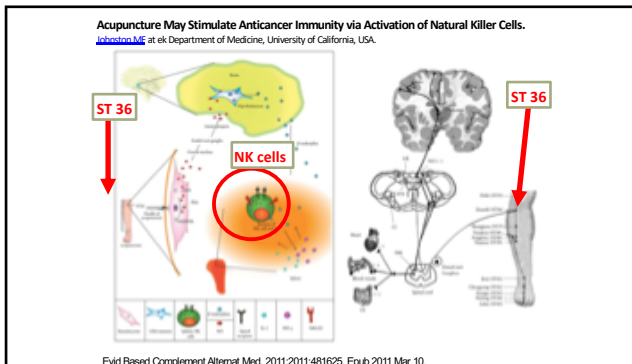
He sea point (St) and earth point
Point of Sea of Water and Grains

Action:
Main point to harmonize the Stomach
Strengthen the Spleen and resolve Dampness
Support Zheng Qi and raise Yuan Qi
Tonify and nourish Blood and Yin
Revive Yang and restore consciousness

Immunomodulation science

Acupoints	HUMAN	ANIMALS
ST36	25	14
LI4	1	32
SP6	2	7
LI5	0	6
YINXIANG	4	4
DU20	3	3
BL25	3	3
REN4	3	3
LI9	3	3

Acupuncture in Modulation of Immunity
<http://dx.doi.org/10.5772/54286>

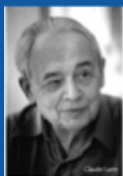


Combination of St-36

Qi- St 36, lu 7, Bl 42, Gv 12
Yuan Qi- St 36, Sj 4, Cv 4
Zheng Qi - St 36, Kid 27, Lu 9

Vitality – Zheng Qi
 Not just Immunity





"By returning to the classical roots
of Chinese medicine, we can make
a truly significant contribution to
the medicine of the future."

The Golden Needle I Spring 2008



Thank You

Wishing You
the Best of Health
and Healing

Yair

Updates: yairmaimon.com
Herbal Research: lifebiotic.com
